



Forest Service  
U.S. DEPARTMENT OF AGRICULTURE



## Valentine Fire Update

### Thursday, September 28, 2023

**Size:** 9,015 acres  
**Cause:** Lightning  
**Completion:** 95%  
**Total personnel:** 200

**Start Date:** August 16, 2023  
**Location:** 11 miles northeast of Young, Arizona and 27 miles east of Payson, Arizona  
**Fuels:** Ponderosa Pine, Hardwood litter and timber

**Highlights:** Crews are working to secure the southwest corner of the fire perimeter and increase interior depth prior to the arrival of strong winds over the weekend.

**Operations:** Wednesday, crews held the perimeter of the fire along FSRD 411 to Lost Salt Canyon and FSRD 200 while other crews cleared snags along FSRD 778. Pumps and hose lines were set up in Haigler Creek to help secure the south-central containment line where there is no road access. Today, aerial and hand ignitions will continue to bring the fire line downslope towards Haigler Creek and FSRD 848. Crews will be patrolling and holding established containment lines throughout the day.

**Fire Ecology:** Wildlife is rarely killed directly by fire, though uncharacteristically severe fire may cause significant damage to wildlife habitat. Animals that are most vulnerable to fire are those with limited mobility, live above ground and/or are nesting or young when the fire goes through an area. Slower moving fires, like the Valentine, can allow enough time for wildlife to react to the fire, and they often return to the recently burned areas soon after the fire is done burning to take advantage of the new growth.

**Weather:** Wednesday, temperatures were cooler with an inversion in the morning and light winds. Today, expect high clouds with a slight cool down and sunny in late afternoon as the clouds disperse. Winds are expected to be the same today as yesterday.

**Closures:** An emergency closure order for the Valentine Fire has gone into effect as of 6 a.m. Sept. 5, 2023. The public is asked to avoid the fire area. The purpose of the closure order is to protect public health and safety during the Valentine Fire, and to protect assigned firefighting personnel engaging in wildland firefighting operations. Signs and gates will be in place to remind the public not to enter the fire area. Please visit the Alerts and Notices page for more information.

<https://www.fs.usda.gov/alerts/tonto/alerts-notice>.

**Safety:** The health and safety of firefighters, and the public are always the highest priority. Members of the public are asked to avoid the fire area.

**Smoke:** The fire will produce considerable amounts of smoke due to excessive fuel accumulation. Smoke from the Valentine Fire may be visible in the surrounding areas for many days. Smoke-sensitive individuals and people with respiratory problems or heart disease are encouraged to take precautionary measures. An interactive smoke map available at, <https://www.airnow.gov/wildfires/> allows you to zoom into your area to see the latest smoke conditions.

#### Information Links and Contacts:

Tonto National Forest <https://www.fs.usda.gov/main/tonto/fire>

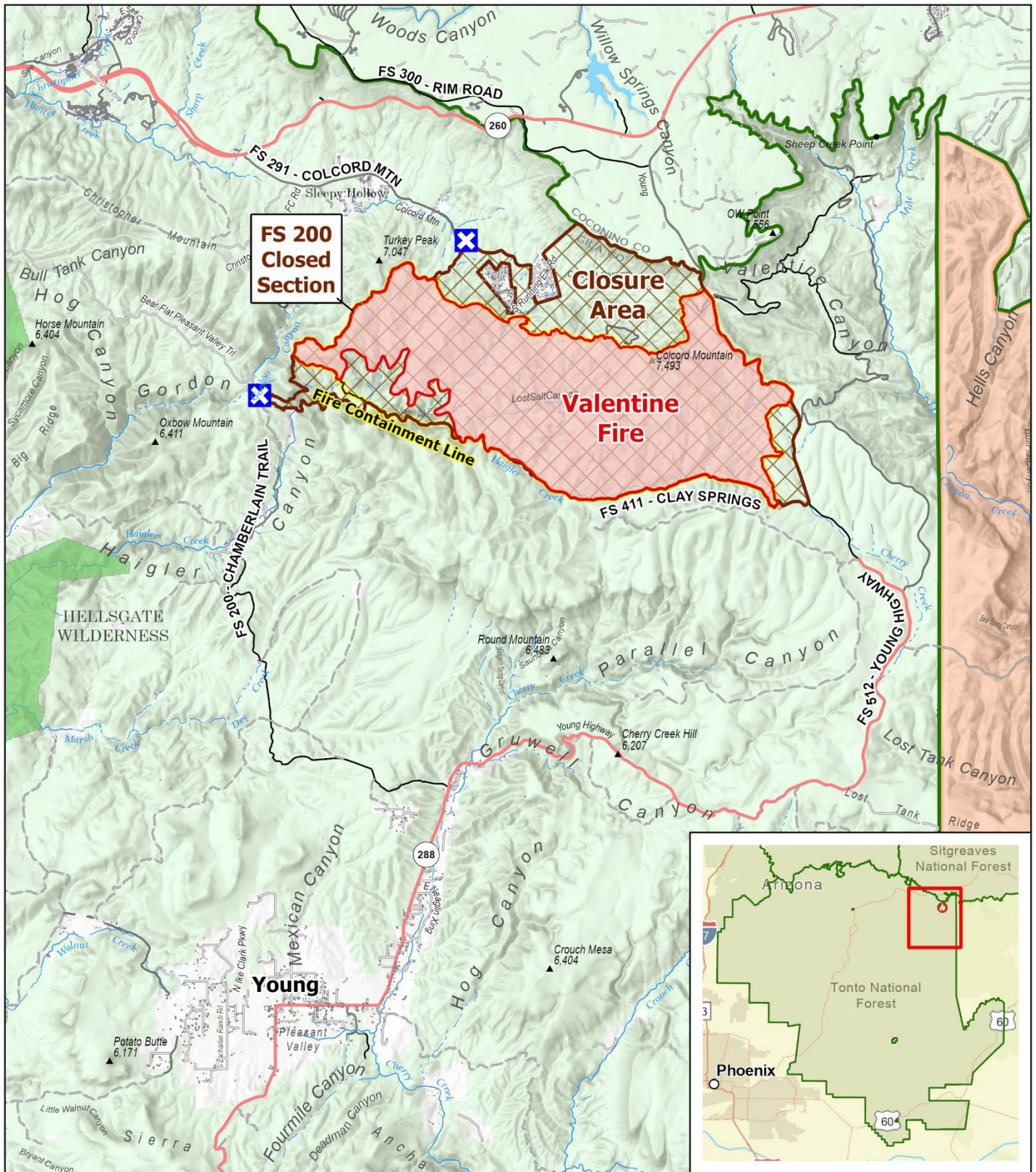
InciWeb <https://inciweb.nwcg.gov/incident-information/aztnf-valentine-fire>

Email [2023.valentine@firenet.gov](mailto:2023.valentine@firenet.gov)

Fire Information Line (928)-421-4579 • Office Hours: 8:00 AM – 8:00 PM



<https://linktr.ee/valentinefire>



## PUBLIC INFORMATION

Valentine Fire  
AZ-TNF-1315  
9/28/2023

9,015 acres at 9/27/2023

1:125,000 - Tonto GIS  
9/27/2023 1944  
Acres from IR and GPS  
North American 1983 Datum, Lat/Long Grid

Closure on FS 200

Wildfire Perimeter

Closure Area

Fire Containment Line

Secondary Highway

Secondary Dirt Road

Wilderness

Lake / Pond

Forest Service Boundary

Forest Service Land

State Land

Tribal Land

